



# GMT MONTHLY MEMBERSHIP PROGRESS REPORT

Results as of: 5/31/2020

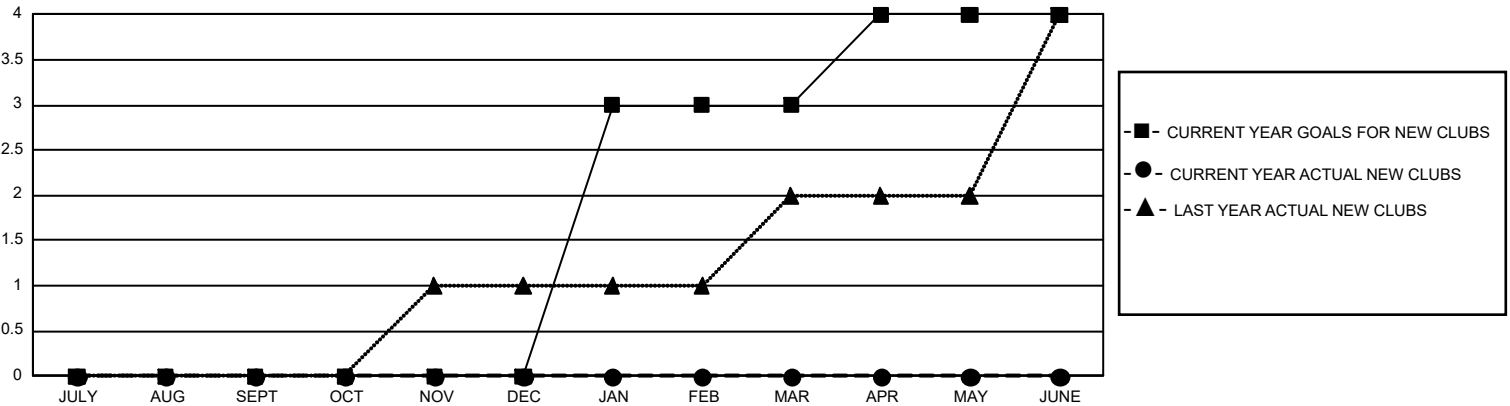
## GMT Constitutional Area 2, Group C

GMT: OPEN

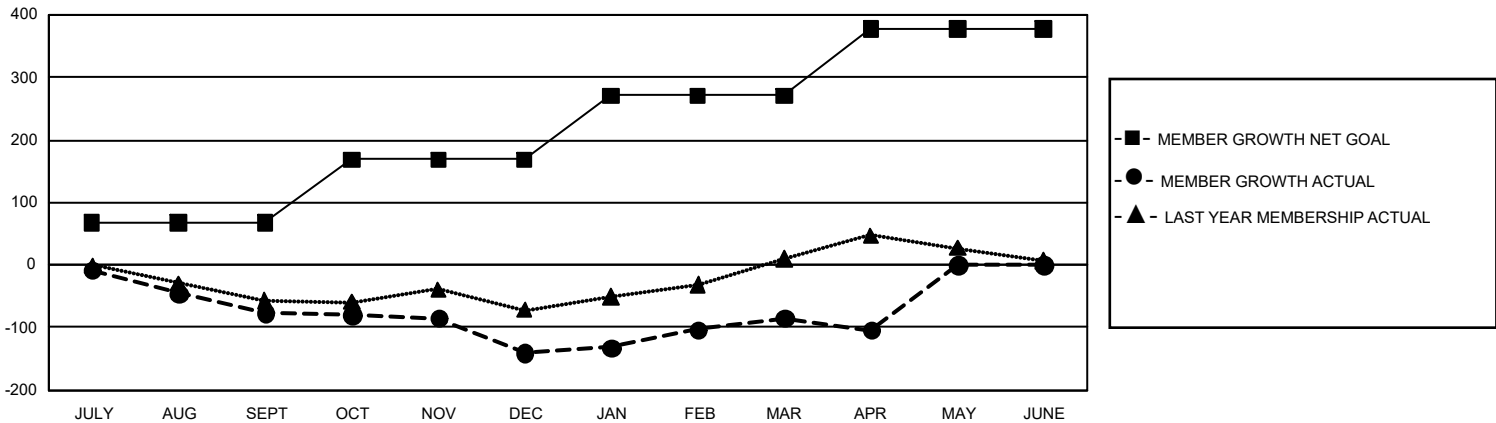
REPORT DOES NOT INCLUDE CLUBS IN UNDISTRICTED AREAS.

| Clubs                 |               |           |               | Members               |                        |                      |  |
|-----------------------|---------------|-----------|---------------|-----------------------|------------------------|----------------------|--|
| RESULTS FOR 2019-2020 |               |           |               | RESULTS FOR 2019-2020 |                        |                      |  |
| QUARTER               | NEW CLUB GOAL | NEW CLUBS | DROPPED CLUBS | QUARTER               | MEMBER GROWTH NET GOAL | MEMBER GROWTH ACTUAL | DROPPED MEMBERS ACTUAL (including transfers) |
| JULY/AUG/SEPT         | 0             | 0         | 2             | JULY/AUG/SEPT         | 201                    | 29                   | 101  |
| OCT/NOV/DEC           | 0             | 0         | 1             | OCT/NOV/DEC           | 306                    | 87                   | 139  |
| JAN/FEB/MAR           | 9             | 0         | 0             | JAN/FEB/MAR           | 306                    | 112                  | 36   |
| APR/MAY/JUNE          | 3             | 0         | 0             | APR/MAY/JUNE          | 321                    | 5                    | 22   |

GOALS AND ACTUAL NEW CLUBS CUMULATIVE



GOALS AND ACTUAL MEMBERS CUMULATIVE



|                         |   |                                     |                |
|-------------------------|---|-------------------------------------|----------------|
| <b>DROPPED CLUBS: 3</b> | 86 CLUBS OF 164 ADDED 1 OR MORE NEW MEMBERS | <b>GENDER DISTRIBUTION</b>          |                |
| <b>DROPPED MEMBERS</b>  |   | MALE                                | 2,584 (65.65%) |
| DECEASED                | 30  | FEMALE                              | 1,352 (34.35%) |
| CLUB CANCELLED          | 24  | TOTAL FAMILY UNIT MEMBERS 679       |                |
| OTHER                   | 244   | FAMILY MEMBERS PAYING HALF DUES 345 |                |
| <b>TOTAL</b>            | <b>298</b>                                  |                                     |                |

[CLICK HERE FOR CUMULATIVE MEMBERSHIP DATA](#)